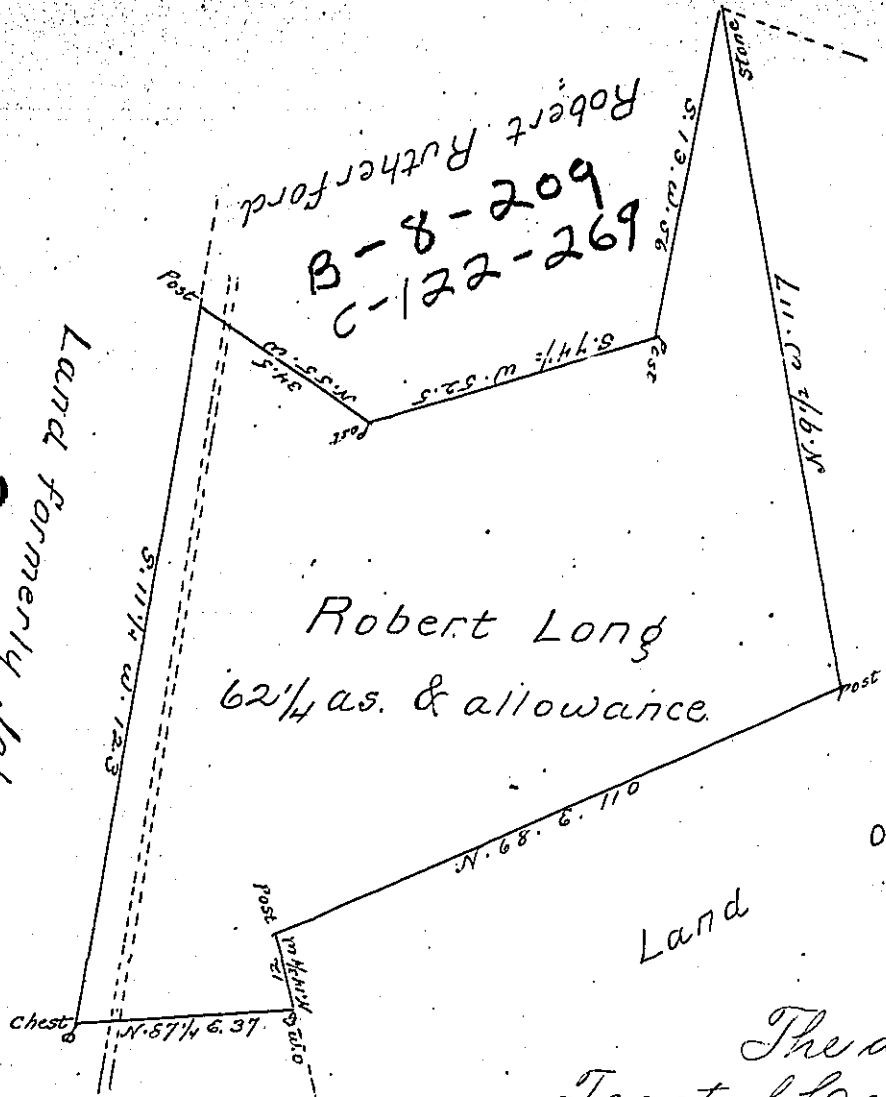


A-73-190

SEE ALSO

B-3-56

B-17-183  
Land formerly John Junkin



Thomas Paine  
 County containing 62 1/4 acres & allowance of six percent for roads  
 & surveyed November 9th. 1811. by J. A. Hindman D.S.

N.B. From the best information I could obtain from George Churchman late a Deputy Surveyor of Chester County and from whom I am unable to obtain the official papers of said County, that are in his possession (he residing in the State of Maryland and refusing to deliver them over) The above described Tract of Land is part of a Tract of <sup>182</sup>~~177~~ acres & allowance which was surveyed in pursuance of a Warrant granted to Robert Long dated the 31st of the 3rd month 1733. It further appears from the papers before me, that in pursuance of a Warrant dated the 5th day of March 1735 granted to Garven Morrison, a Survey of 1310 acres was made adjoining said Long's Tract; and that in pursuance of an Order dated February 24th 1746 granted to Hugh Thompson a Survey of 127 acres was made adjoining the two former Tracts; and that said Churchman included the said three Surveys together in one draft, and returned the whole into the Surveyor General's office in the year 1765, in the name of said Hugh Thompson, without particular regard to the interior lines.

J. A. Hindman D.S.

To Andrew Porter Esqr. }  
Surveyor General }

\* 31st. day of May 1733

IN TESTIMONY that the above is a copy of the original remaining on file in the Department of Internal Affairs of Pennsylvania, made conformably to an Act of Assembly approved the 16th day of February, 1833; I have hereunto set my Hand and caused the Seal of said Department to be affixed at Harrisburg, this sixth day of August 1901

*James W. Latta*  
 Secretary of Internal Affairs.